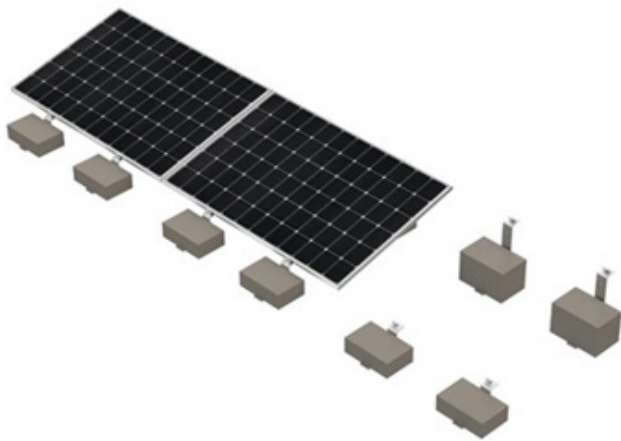


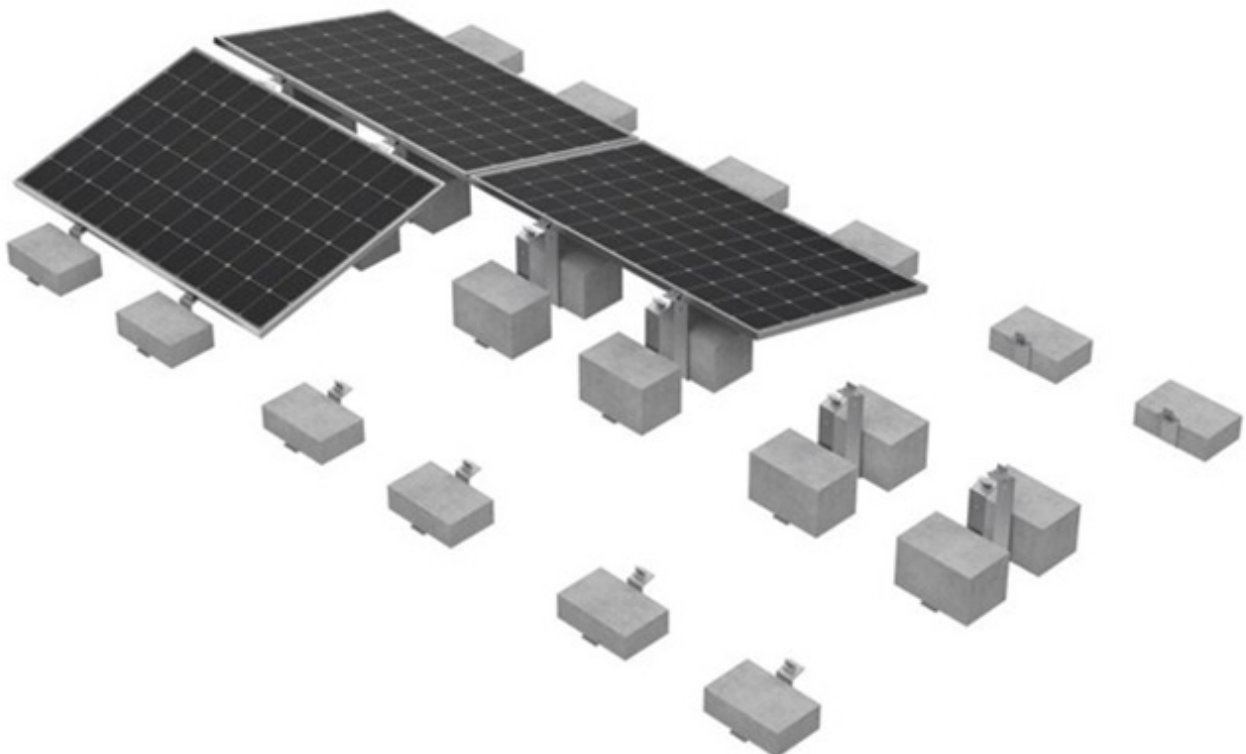
CHARACTERISTIC

Keno sp.z o.o. is pleased to present you a non-invasive solution for flat roofs using a ballast structure with K-58 aluminum handles. The structure is dedicated to cases where it is not possible to interfere with the roof sheathing



- EASY AND QUICK INSTALLATION
- POSSIBILITY OF MOUNTING EAST / WEST
- CLAMP ASSEMBLY ON THE LONG SIDE OF THE MODULES

[SEE CATALOG](#)



DESCRIPTION OF A BALLAST CONSTRUCTION ON A FLAT ROOF WITH K-58 HANDLES

Keno sp.z o.o. provides a 10-year warranty on the above structure. The structure is assembled by loading the K-58-1 (Figures 1, 2) and K-58-4 (Figures 2, 4) mounting brackets. The technical department of Keno sp.z o.o., at the customer's request, can calculate the required minimum ballast. For this purpose, specific information on the investment is needed (see table 1). The ballast structure can be used on roofs where the angle of inclination does not exceed 5° and the height of the building does not exceed 15 m.

Keno sp.z o.o. ballast structures they allow modules to be installed only on the long side.

NECESSARY DATA FOR BALLAST CALCULATION

1.The exact location of the investment.
2. Roof dimensions + building height.
3. Module dimensions + weight.
4. Visualization of modules distribution on the roof.
5. Construction used + angle of inclination of modules

TECHNICAL DRAWING

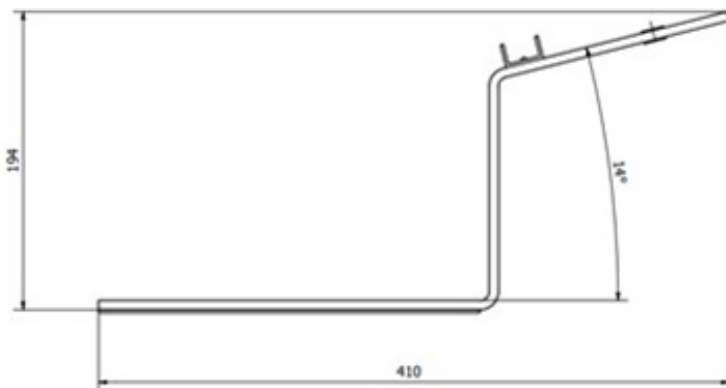


FIG.1

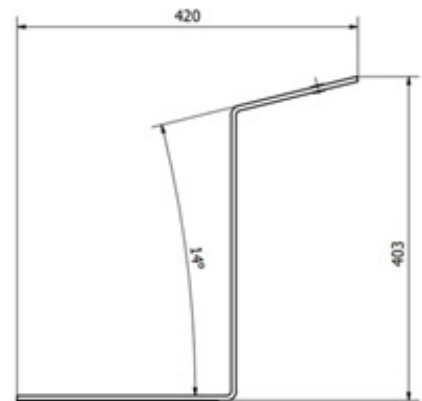


FIG.3



FIG.2

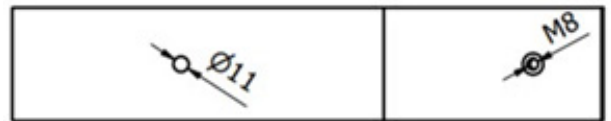


FIG.4