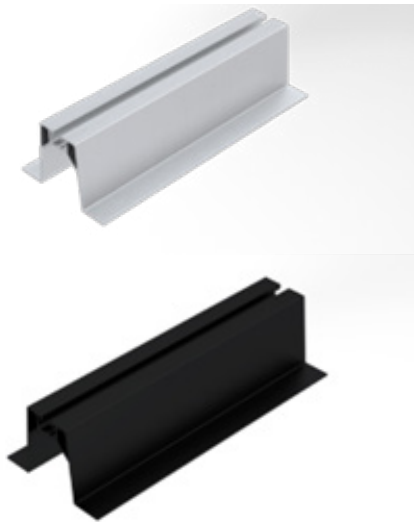


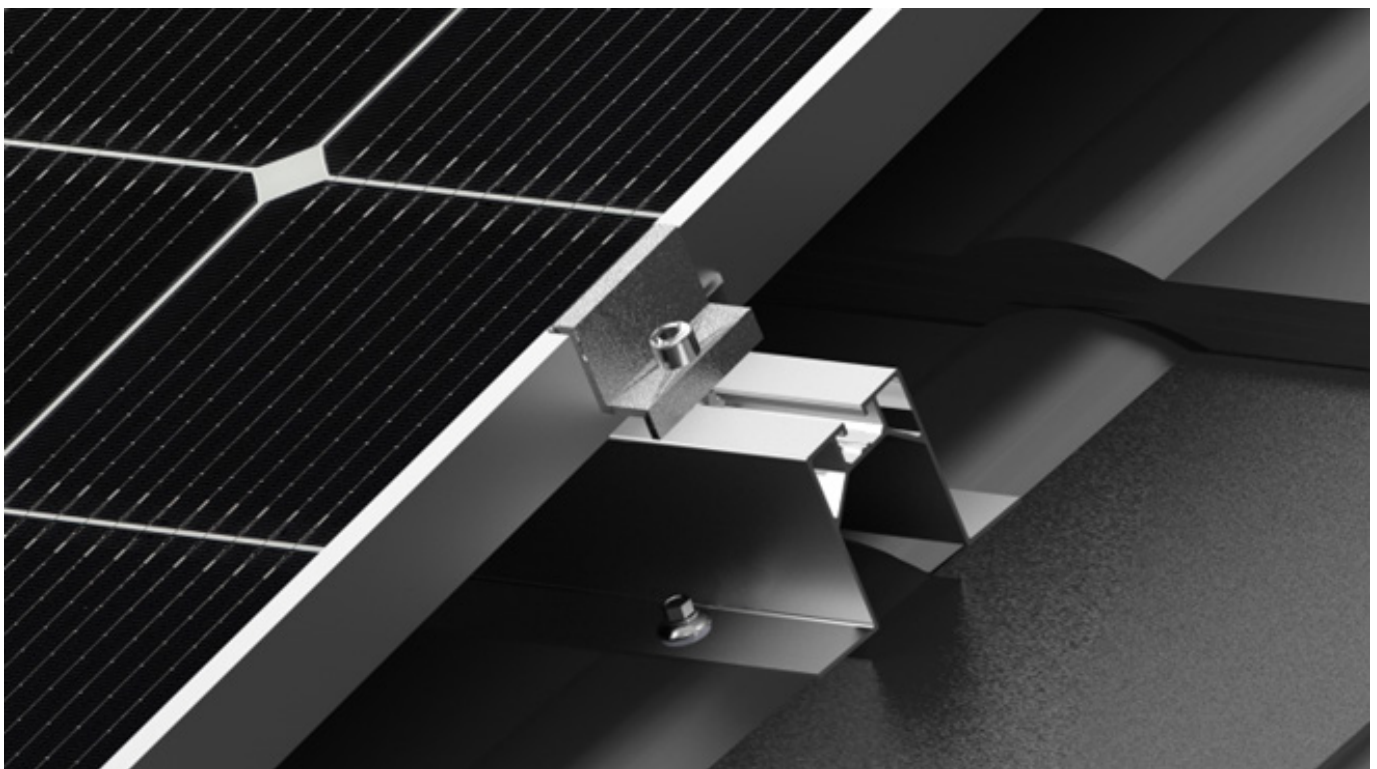
CHARACTERISTIC

Keno sp.z o.o. is pleased to present you a solution that can be used on all metal tile roofs, with the use of K-56 bridges



- EASY AND QUICK INSTALLATION
- COMPATIBILITY WITH MOST ROOF TILES AVAILABLE ON THE MARKET
- AVAILABLE IN BLACK COLOR

[SEE
CATALOG](#)



CONSTRUCTION OF A BRIDGE ON A SHEET TILE

DESCRIPTION OF THE CONSTRUCTION OF BRIDGES ON A SHEET TILE

Keno sp.z o.o. provides a 10-year warranty on the above structure. The structure is assembled by screwing the K-56 bridges to the sheet surface using four K-20 sheet metal screws. The minimum thickness of the sheet on which the assembly can be made is at least 0.4 mm. This structure was designed for roofs covered with steel tiles. The stems are offered in two lengths: 330 mm and 470 mm. They are also available in black.

TECHNICAL DRAWINGS

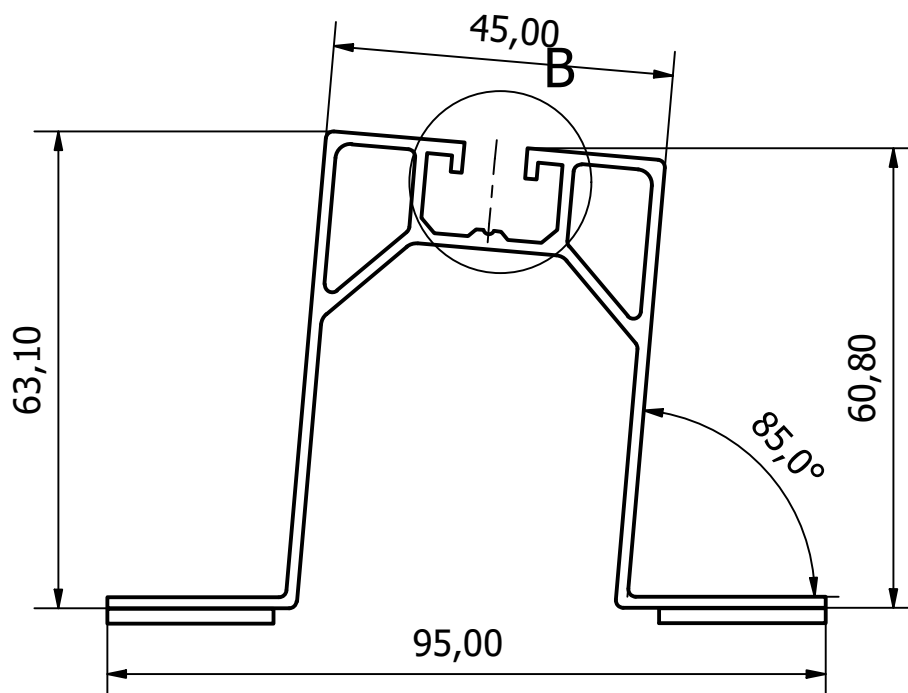


Fig. 1 Dimensions of the K-56 element