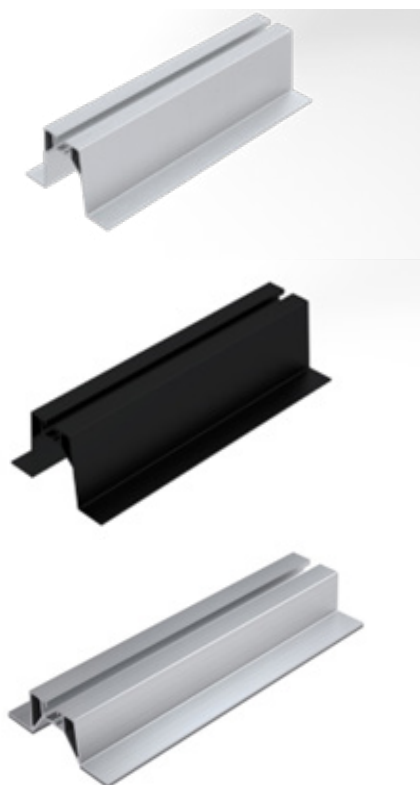


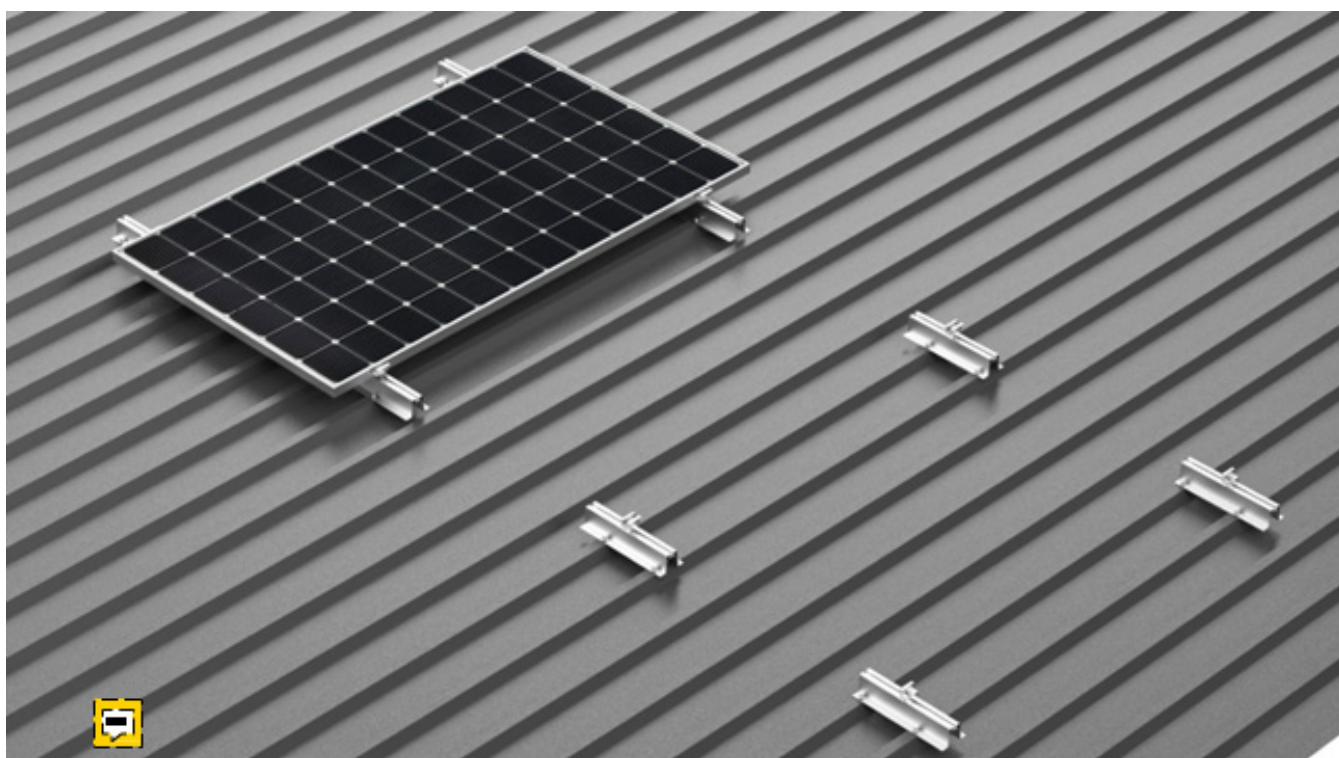
CHARACTERISTIC

Keno sp.z o.o. is pleased to present you a solution for use on roofs covered with trapezoidal sheet and sandwich panels.



- EASY AND QUICK INSTALLATION
MOBILITY THAT ENABLES THE
- INSTALLATION OF THE HANDLE ON THE ENTIRE LENGTH OF THE TRAPEZOIDAL SHEET
- AVAILABLE IN BLACK

[SEE CATALOG](#)



DESCRIPTION OF THE CONSTRUCTION TRAPEZOIDAL BRIDGES

Keno sp.z o.o. provides a 10-year warranty on the above structure. The structure is assembled by screwing the K-14 bridges to the sheet surface using four K-20 sheet metal screws. The minimum thickness of the sheet on which the assembly can be made is at least 0.4 mm. The stems are offered in two lengths: 330 mm and 470 mm. They are also available in black.

TECHNICAL DRAWINGS

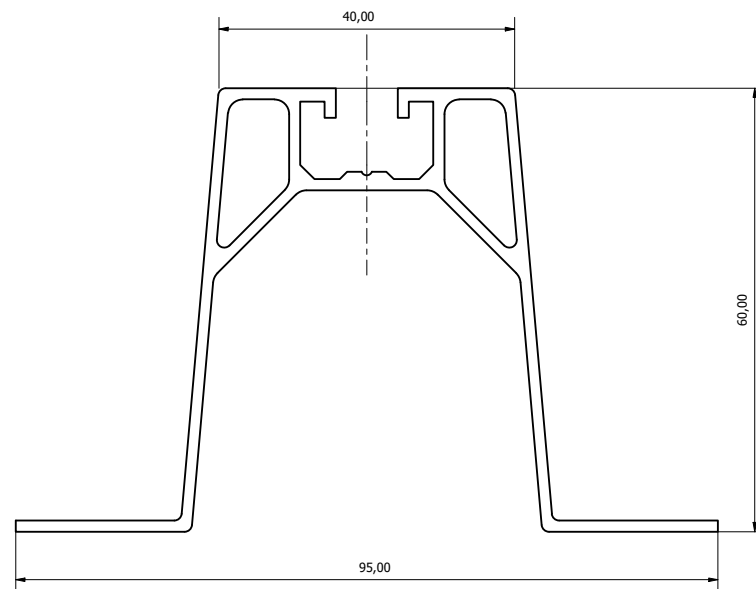


Fig. 1 Dimensions of the K-14 element

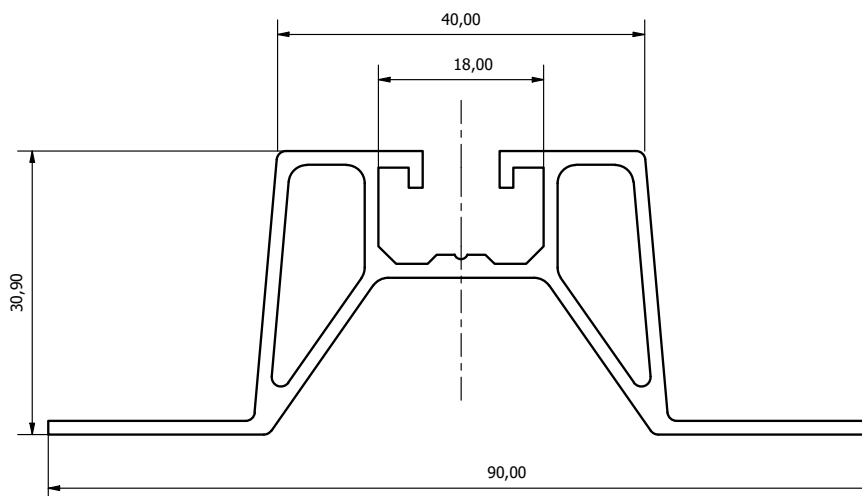


Fig. 2 Dimensions of the K-14-N element